

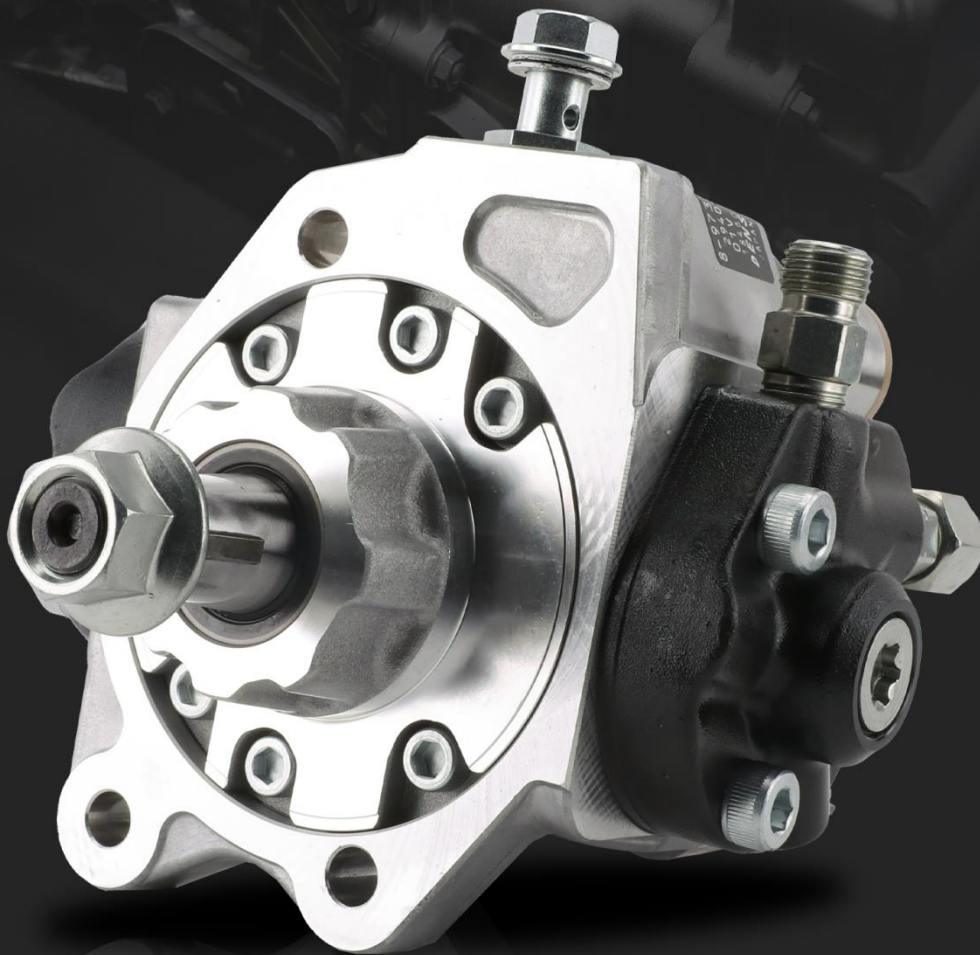
**TDPFUEL**

COMMON RAIL

0445010565 Top Fuel Pump Technical File

SKU: Y3L30445010565

# TOP FUEL PUMPS



TECHNICAL DOCUMENT COVER

TECHNICAL  
DOCUMENT COVER

**TOP FUEL  
PUMPS**

## 0445010565 Top Fuel Pump Technical File

### Content

1. 0445010565 Top Fuel Pump Introduction .....	2
1.1. 0445010565 Top Fuel Pump Basic Information .....	2
1.2. 0445010565 Top Fuel Pump Common Part Number .....	2
1.3. 0445010565 Top Fuel Pump Parameters .....	2
1.4. 0445010565 Top Fuel Pump Specifications And Dimensions .....	2
1.5. 0445010565 Top Fuel Pump Quality Control .....	3
1.6. 0445010565 Top Fuel Pump Customization Service .....	3
1.7. 0445010565 Top Fuel Pump Packaging List And Packaging Dimensions .....	4
1.8. 0445010565 Top Fuel Pump Testing Standards and Certificates .....	5
1.9. 0445010565 Top Fuel Pump Warranty Instructions .....	5
2. 0445010565 Top Fuel Pump Technical Support .....	7
2.1. 0445010565 Top Fuel Pump Utilized Location .....	7
2.2. Reasons of 0445010565 Top Fuel Pump Not Working Normally .....	7
2.3. Causes of 0445010565 Top Fuel Pump Being Damaged .....	7
2.4. 0445010565 Top Fuel Pump Installation .....	8
2.5. 0445010565 Top Fuel Pump Storage Standards .....	9
2.6. 0445010565 Top Fuel Pump Technical Support Obtaining Methods .....	9
3. 0445010565 Top Fuel Pump Purchase And Delivery .....	9
3.1. 0445010565 Top Fuel Pump Purchase And Payment Term .....	9
3.2. 0445010565 Top Fuel Pump Main Sales Markets .....	10
3.3. 0445010565 Top Fuel Pump Declaration Requirements .....	10
3.4. 0445010565 Top Fuel Pump Shipping Ways .....	10
3.5. 0445010565 Top Fuel Pump Delivery Time .....	10
3.6. 0445010565 Top Fuel Pump Logistics Time for Destination Out of China's Areas .....	10
3.7. 0445010565 Top Fuel Pump Shipping Package .....	11
4. Company Information .....	11
4.1. Company Introduction .....	12
4.2. Contact Information .....	12
5. Copyright Statement .....	12

## 0445010565 Top Fuel Pump Technical File

### 1. 0445010565 Top Fuel Pump Introduction

#### 1.1. 0445010565 Top Fuel Pump Basic Information

Title	Common Rail 0445010565 Top Fuel Pump CP4S1 Series	Quality
SKU1	Y3L30445010565	Original New

#### 1.2. 0445010565 Top Fuel Pump Common Part Number

##### (1) Top Fuel Pump Exchange Information

Top Fuel Pump Part Number	Compatible Number	Car Model	OE Number
0445010565	0 445 010 532	AUDI/SEAT/SKODA/VW (VOLKSWAGEN)	03L 130 755 AA
	0 986 437 405		

##### (2) Top Fuel Pump Application Information

Vehicle Brand	Car Model	Engine Model	Production Date	Power (KW)	Horse Power	Emission (L)	Cylinder	Power Source (V)
AUDI	A1 2.0 TDI	CFHB	09/2011 - 04/2015	100	136	2.0	4	12
SEAT	Altea 2.0 TDI	CFHC	09/2010 - 07/2015	103	140	2.0	4	12
SKODA	Octavia 2.0 TDI	CLCA	03/2010 - 06/2013	81	110	2.0	4	12
VW (VOLKSWAGEN)	Amarok 2.0 TDI	CNFA	11/2011 - 10/2012	90	122	2.0	4	12

##### (3) Top Fuel Pump's Common Writing Methods

0445010565, 0 445 010 565, 0445 010 565, 0445010 565, 0 445 010565, 0 445010565, 0445010565, 0 445 010 532, 0445 010 532, 0445010 532, 0 445 010532, 0 445010532, 0986437505, 0 986 437 505, 0986 437 505, 0986437 505, 0 986 437505, 0 986437505, 504342505, 03L 130 755 AA

#### 1.3. 0445010565 Top Fuel Pump Parameters

Top Fuel Pump Adaptation System: [Common Rail System](#)

Top Fuel Pump Series: [CR/CP4S1/R40/20S](#)

Top Fuel Pump Type: [High Pressure Pump, CR System](#)

Top Fuel Pump Pressure: [1,800.0 bar](#)

#### 1.4. 0445010565 Top Fuel Pump Specifications And Dimensions

Top Fuel Pump Size: [28cm\\* 26 cm \\*23 cm](#)

Top Fuel Pump Net Weight: [3.8kg](#)

Top Fuel Pump Gross Weight: [4.0kg](#)

**Top Fuel Pump Quality:** [Original New](#)

**Top Fuel Pump Package Size:** [30 cm\\*28 cm \\*25 cm](#)

**Top Fuel Pump Type:** [High Pressure Top Fuel Pump](#)

**Top Fuel Pump MOQ:** [1 piece](#)

### 1.5. [0445010565](#) Top Fuel Pump Quality Control

#### (1) Top Fuel Pump Testing

All parts of the top fuel pump have undergone electrical characteristics testing, precision testing, high temperature testing, low temperature testing, withstand pressure testing, leakage testing, durability testing, and various working conditions testing.

#### (2) Top Fuel Pump Installation




In addition, the top fuel pump production and installation process is quality controlled. Our company strictly follows the standard product installation data and product installation steps for installation, such as top fuel pump stroke test, top fuel pump solenoid valve tightening torque, top fuel pump tightening torque.

#### (3) Top Fuel Pump Inspection

The factory inspection of the top fuel pump has undergone three inspections: full inspection, random inspection, and batch inspection. Different brands of test benches are used to test the same top fuel pump for more than three times for factory inspection, and the fuel injector installation testing environment are progressed in dust-free workshop.

### 1.6. [0445010565](#) Top Fuel Pump Customization Service

**(1) Top Fuel Pump Customization Service Coverage:** Meet OEM manufacturers' customization needs for shell engraving, logo engraving, top fuel pump internal packaging, top fuel pump external packaging and labels, etc.

NO.	1	2	3
Picture			
Name	Top Fuel Pump Shell Engraving	Top Fuel Pump Packaging	White Label

#### (2) Top Fuel Pump Customization Service Requirements:

The purchase of customized top fuel pump is no less than [10](#) pieces.

The purchase of customized top fuel pump boxes is no less than [1000](#) pieces.


⚠ Customized products involve the need of specify logo, the OEM manufacturer needs to provide trademark authorization and the sample of logo image file.

⚠ Once the customized top fuel pump is sold, it can't be returned or exchanged if there is no quality problems.



### 1.7. 0445010565 Top Fuel Pump Packaging List And Packaging Dimensions

#### (1) Top Fuel Pump Parts List

NO.	1	2	3
Picture			
Name	Top Fuel Pump Assembly	Blue Anti-Rust Bag	Lining
Description	Top fuel pump part number: 0445010565	Prevent top fuel pump from rusting	Prevent the top fuel pump from being damaged by external forces
NO.	4	5	6
Picture			
Name	Top Fuel Pump Packaging Box	Top Fuel Pump Protective Cover	White Label
Description	Place the top fuel pump and accessories	Protect the top fuel pump hole from contamination and blockage	Product number

⚠ Minors are prohibited from using the top fuel pump assembly, O-ring, Oil inlet protective cover, top fuel pump shell protective cover, oil return protective cover, VCI anti-rust bag, and bubble bag to avoid personal injury.

⚠ O-rings and repair kits are one-time installation accessories and need to be replaced when installed again.

⚠ Oil inlet protective cover, top fuel pump shell protective cover, and oil return protective cover are recyclable accessories and can be reused.

⚠ VCI anti-rust bags and bubble bags are non-degradable materials, please dispose of them properly after using.

⚠ The top fuel pump and the installation part duct must be treated with appropriate sealing oil during installation.

#### (2) Top Fuel Pump Packaging Box Size



Pic No.1

NO.	Name	Top Fuel Pump Packaging Size (Cm)
1	Top Fuel Pump Packaging Box	32*24*27

### 1.8. 0445010565 Top Fuel Pump Testing Standards and Certificates

[www.topfuelpump.com](http://www.topfuelpump.com) can provide the factory quality inspection test report of each top fuel pump to ensure that each top fuel pump delivered meets the engine performance indicators.

<b>BOTEN</b>		<b>测试报告</b>		4.05.2019 10:42:09	
承办单位: _____					
电话: _____		地址: _____			
传真: _____		检测人: _____			
客户地址: _____					
电话: _____		送检单位: _____			
传真: _____		客户姓名: _____			
检测项目: _____					
客户名称: <u>                    </u>					
型号/零件号: _____					
检测地点: _____					

检测结果					
检测器型号: C95002-6511					
标准值范围	检测结果	标准值范围	检测结果	标准值范围	检测结果
LEAK TEST:	38	-----	6.5	20.0 ± 1.5	✓
Back:	38	-----	75.7	48.0 ± 2.5	✓
WFRM:	38	127.3 ± 16.5	C3	-----	✗
Max:	2315	218.5 ± 14.4	C3	-----	✓
TL:	28.4	24.0 ± 3.5	C3	-----	✓
LL:	143	73.7 ± 4.9	C3	-----	✓
VE:	6.7	4.0 ± 1.8	C3	-----	✓

<input type="checkbox"/> 故障前	<input type="checkbox"/> 维修后	检测器型号: _____
------------------------------	------------------------------	--------------

Pic No.2


### 1.9. 0445010565 Top Fuel Pump Warranty Instructions

## (1) Product Warranty Conditions And Instructions

It is necessary to provide pictures, videos, or test reports tested by the top fuel pump inspection equipment when the top fuel pump is abnormal during use as evidence to feed back to the salesman. Abnormal conditions are properly explained such as: 1. Smoke, 2. Engine shake, 3. Difficulty starting the engine, 4. Engine noise, 5. Oil leakage etc.

## (2) Top Fuel Pump Warranty Coverage

- ① After customer receives the 0445010565 top fuel pump within 15 days, if there is a performance failure and the product has no damage on surface, customer can choose to replace it or repair it;
- ② If the 0445010565 top fuel pump has performance problems during the warranty period (6-12 months), and it is confirmed to be product's problems after being tested, you can contact our salesmen to replace the same model or a reworked product with the same performance for free;
- ③ If the top fuel pump shell has obvious scratches, it can only be repaired and it will be returned as it is if the product is confirmed to be fault-free.

 **Tips:** For products not covered by warranty, our company can provide paid maintenance services. For products after paid repaired, the same performance problem will have a free warranty period within 3 months from the date of repairing.

## (3) Top Fuel Pump Is Not Covered By Warranty

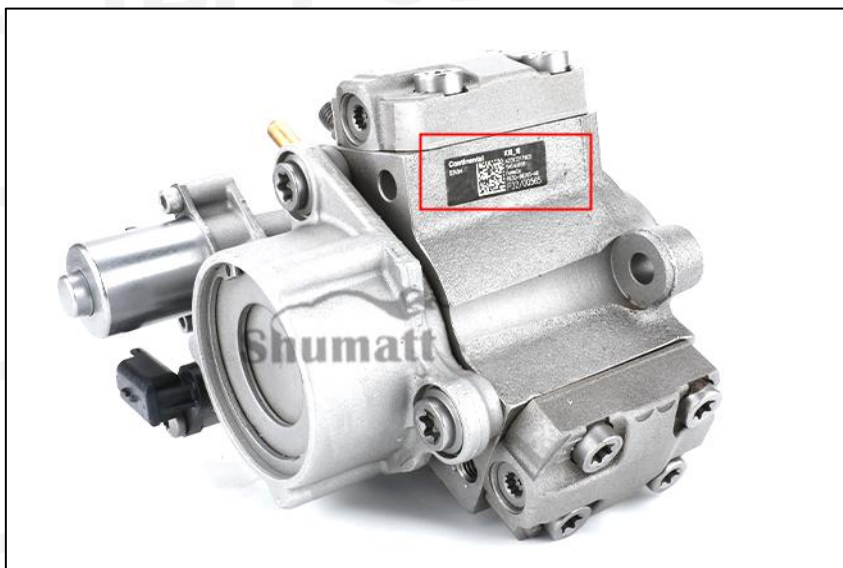
- (1) The warranty period has expired.
  - (2) Top fuel pump failure caused by high temperature, high pressure, humidity, rain and snow, saline-alkali land, earthquake, and used in abnormal environment.
  - (3) Customer disassembles or repairs the top fuel pump personally resulting in damage to the top fuel pump.
  - (4) Top fuel pump damage caused by man-made reasons (throwing, strong magnetic field magnetization, set fire).
  - (5) Top fuel pump failure or top fuel pump damage caused by non-top fuel pump design, technology, manufacturing, quality and other issues.
  - (6) Top fuel pump failure due to system pressure exceeding system approved pressure.
  - (7) Top fuel pump failure caused by system voltage exceeding approved voltage.
  - (8) Top fuel pump failure caused by impurities (water, lead, aluminum powder, iron powder, sulfide) in the system fuel exceeding the standard requirements.
  - (9) Top fuel pump failure caused by not installing according to the tightening torque specified in the vehicle engine maintenance manual (the tightening torque is too large or too small).
  - (10) Top fuel pump failure caused by not following the installation angle specified in the vehicle engine maintenance manual.
  - (11) Top fuel pump failure caused by not following the cleaning requirements specified in the vehicle engine maintenance manual.
  - (12) Top fuel pump failure caused by failure to replace consumable parts as specified in the vehicle engine maintenance manual.
  - (13) Top fuel pump failure caused by not complying with the intake system fit clearance and exhaust system fit clearance requirements specified in the vehicle engine maintenance manual.
- Failure to replace the consumable parts and the fitting clearance of the oil inlet system pipeline and the top fuel pump connection in accordance with the fuel intake system specified in the vehicle engine maintenance manual.

## 2. 0445010565 Top Fuel Pump Technical Support

### 2.1. 0445010565 Top Fuel Pump Utilized Location

(1) Example: The code of the Top Fuel Pump is shown as follows

NO.	Name
A	brand, logo, part number



Pic No.

### 2.2. Reasons of 0445010565 Top Fuel Pump Not Working Normally

- (1) There is air in the oil circuit of the engine fuel system.
- (2) Vehicle top fuel pump oil supply system is not normal.
- (3) Engine common rail system oil leakage or pressure limiting valve damage.
- (4) There is a short circuit, cutting out and poor contact in the wiring harness connected to the top fuel pump of the vehicle.
- (5) The long-term placement of the top fuel pump causes the anti-rust oil to solidify, and the internal components are stuck or the oil holes are blocked.

**⚠ Before installing, carefully check whether other components in the common rail system are damaged so as to prevent the top fuel pump from not working properly after being replaced.**

### 2.3. Causes of 0445010565 Top Fuel Pump Being Damaged

- ① Failure to follow the engine maintenance manual during disassembly or installation may result in damage to the top fuel pump.
- ② The fuel oil used for the vehicle does not meet the standard cause damage to the top fuel pump, such as: the water content in the fuel oil exceeds the standard, iron powder, aluminum powder, sulfide impurities exceed the standard, etc.
- ③ The engine is not regularly maintained according to the engine maintenance manual (please refer to the vehicle maintenance manual for the maintenance mileage). For example, failure to replace the lubricating oil of the engine system for a long time will cause abnormal wear of the engine, excessive exhaust gas volume or a large amount of carbon deposits inside the engine. The filter is not replaced



during maintenance or the replaced filter cannot reach the original filter standard. all above reasons can cause damage to the top fuel pump.

- ④ The abrasion of the oil pump produces iron powder and aluminum powder enter the top fuel pump and cause damage to the top fuel pump.
- ⑤ The deformation and abrasion of fuel tank result in iron powder or aluminum powder entering the top fuel pump and causing damage to it.
- ⑥ The top fuel pump is damaged due to replacement or adjustment of the relevant parts of the top fuel pump. For example, the valve clearance does not meet the standard after the engine is repaired, the replacement or modification of the wiring harness connected to the top fuel pump fails to meet the original standard.
- ⑦ The engine is overheated and overloaded for a long time working results in damage to the top fuel pump.
- ⑧ The top fuel pump will be damaged naturally at the end of its working life.
- ⑨ The top fuel pump is magnetized (top fuel pump parts' magnetic exceeded) causing the top fuel pump to not work properly.

**⚠ Before replacing the top fuel pump, please check the engine parts carefully according to the engine maintenance manual to avoid the top fuel pump being damaged again after replacement.**

## 2.4. **0445010565** Top Fuel Pump Installation

### (1) **0445010565** Top Fuel Pump Installation Precautions:

(1) The replacement of the top fuel pump must strictly follow the electrical system, the approved pressure of the low-pressure fuel intake system, the approved pressure of the high-pressure fuel circuit system, and fuel system replacement consumables requirements (including the low-pressure fuel circuit system filter and the high-pressure fuel circuit) specified in the vehicle engine maintenance manual.

(2) When install the top fuel pump, strictly follow the manual of replacement of wearing parts of the fuel system, cleaning requirements for the connection between the fuel system and the top fuel pump, the fitting clearance of the top fuel pump connection, the installation angle and tightening torque of the top fuel pump, the fitting clearance of the intake system, and the fitting clearance of the exhaust system, so that to ensure the service life of the engine and the normal operation of the top fuel pump.

(3) When installing the top fuel pump on the engine, it is necessary to clean the engine block, cylinder head and other parts connected to the top fuel pump, and ensure that there is no dust, carbon deposits, water, rust spots, etc.

(4) If don't replace new washer shim, it can lead to: deformation of top fuel pump, oil leakage and air leakage, which will cause serious damage to the top fuel pump and top fuel pump to break and cause damage to the engine.

(5) When installing the top fuel pump on the engine, please carefully check the components related to the installation of the top fuel pump are not deformed, such as the top fuel pump pressure plate, SCP4S1ew, top fuel pump rod and other accessories, and install it in strict accordance with the operation steps of the engine maintenance manual.

(6) It is forbidden to operate the bare top fuel pump for a long time in an environment with serious dust pollution and corrosion to iron products.

(7) It is forbidden to operate the bare top fuel pump for a long time in a strong magnetic field environment.

## 2.5. 0445010565 Top Fuel Pump Storage Standards

### (1) Choose a suitable storage place

The warehouse and cargo yard where the top fuel pumps are stored should be kept clean and dry, and away from the factory buildings that generate harmful gases and dust; do not mix with acid, alkali, salt and other substances; the storage place should have a good drainage system; the cargo yard should be flattened with gravel or furnace ash etc. to enhance the water permeability of the surface layer to keep the reservoir area dry.

### (2) Strict storage requirements

Strict inspections should be carried out when the top fuel pumps are put into storage, the surface cleaning work should be done well to remove water traces, oil stains, ash and other dirt, remove the rust and do anti-rust treatment in time. Packaged top fuel pumps must be protected from damage.

### (3) Keep the warehouse dry and do moisture-proof work

The relative humidity is usually below 70% for the top fuel pumps placed in the room, and the corrosion of the top fuel pumps is significantly reduced.

Top fuel pumps must be stored in the warehouse, and they are forbidden to store in the same warehouse with commodities with high water content.

### (4) Reasonable stacking

After the top fuel pump is exposed to rain, the corrosion rate will increase significantly. The purpose of sealing is to isolate the top fuel pump from rainwater and humid air, so the warehouse window should be checked in time to avoid rainwater entering the warehouse.

If the top fuel pump package is damaged, it should be repaired or replaced; when the package is damp, the packaging material should be dried; if the original anti-corrosion and oil applied at the factory is found to be damaged or dried up, it should be cleaned and re-applied oil in time.

⚠ It is forbidden to leave the top fuel pump exposed in the air for a long time.

⚠ It is forbidden to store acid, alkali, salt and other substances together with the top fuel pump.

⚠ The unpacked top fuel pump must be rust-proof during secondary storage.

## 2.6. 0445010565 Top Fuel Pump Technical Support Obtaining Methods

- (1) Top Fuel Pump Technical Data: <https://www.topfuelpump.com/download/>
- (2) Top Fuel Pump Technical Videos: <https://www.topfuelpump.com/videos/>
- (3) Top Fuel Pump Encyclopedia: <https://www.topfuelpump.com/category/news/encyclopedia/>

## 3. 0445010565 Top Fuel Pump Purchase And Delivery

### 3.1. 0445010565 Top Fuel Pump Purchase And Payment Term

**Payment Method:** T/T, Paypal, Alipay, WeChat

⚠ Please contact our salesmen for specific payment information.

### 3.2. 0445010565 Top Fuel Pump Main Sales Markets

**Main Sales Markets Of Top Fuel Pump:** Asia, Europe, North America, South America, Africa etc.

### 3.3. 0445010565 Top Fuel Pump Declaration Requirements

We can assist customers by providing the following documents for import customs clearance: contract, invoice, packing list, bill of lading, insurance policy, certificate of origin, etc.

### 3.4. 0445010565 Top Fuel Pump Shipping Ways

**Destination in China areas:** SF Express, Debon Express, the corresponding logistics company can be provided according to customer requirements in special cases.

**Destinations out of China's areas:** DHL, UPS, FedEx, TNT air, ocean or other shipping methods required by customers.

### 3.5. 0445010565 Top Fuel Pump Delivery Time

**Delivery Time:** Send out within 3 – 7 working days after receiving payment (Except for special products and special cases).

### 3.6. 0445010565 Top Fuel Pump Logistics Time for Destination Out of China's Areas

**DHL Logistics Time:**

Place Of Departure	Hong Kong	Other Countries Or Regions In Asia	Australia and New Zealand	Europe	America	Other Countries
China Mainland	7 Days	7 Days	8 Days	8 Days	8-12 Days	7-10 Days

**UPS Logistics Timeliness: Country or region of origin: Mainland China**

Country of Destination	Estimated Arrival Time	Country of Destination	Estimated Arrival Time	Country of Destination	Estimated Arrival Time
Japan	3 Days	Britain	5-7 Days	Egypt	5-7 Days
Turkey	5-7 Days	Singapore	3 Days	Switzerland	5-7 Days
Bahrain	5-7 Days	Latvia	7-10 Days	New Zealand	7-10 Days
Sri Lanka	5-7 Days	Thailand	3 Days	Austria	5-7 Days
Romania	5-7 Days	Vietnam	3-5 Days	Estonia	5-7 Days
Malaysia	3-5 Days	Israel	5-7 Days	Mexico	7-10 Days
France	5-7 Days	USA	5-7 Days	United Arab Emirates	5-7 Days
Italy	5-7 Days	Netherlands	5-7 Days	Bengal	7-10 Days
lebanon	5-7 Days	Philippines	3-5 Days	Greece	7-10 Days
South Korea	3 Days	Spain	5-7 Days	Myanmar	5-7 Days
Canada	5-7 Days	Germany	5-7 Days	Saudi Arabia	7-10 Days
Portugal	5-7 Days	Australia	5-7 Days	South Africa	7-10 Days
Denmark	5-7 Days	Belgium	5-7 Days	Ukraine	7-10 Days
India	7-10 Days	Qatar	7-10 Days	Poland	5-7 Days
Indonesia	3-5 Days	Morocco	7-10 Days	Pakistan	7-10 Days
Kuwait	7-10 Days	/	/	/	/

⚠ The logistics time is for reference only, subjects are according to the actual arrival.

### 3.7. 0445010565 Top Fuel Pump Shipping Package

**Domestic express packaging:** Usually wrapped in waterproof scotch tape, such as picture No.1.

**International express packaging:** Wrapped with waterproof yellow tape after wrapping the black protective film, such as picture No. 2.

**Pallet Shipping:** Use fumigation free and recycling trays that meet export requirements, and use white wrapping protective film to wrap and bind with cable ties for the outside, such as picture No. 3, also, the products can be packaged according to customers' requirements.

⚠ The packing tray is made of plastic and can be recycled.

⚠ Transparent tape, yellow tape, black wrapping protective film, white wrapping protective film are non-degradable materials, please dispose of them properly.

⚠ Minors are prohibited from using transparent tape, yellow tape, black wrapping protective film, and white wrapping protective film to avoid personal injury.

No.	1	2	3
Image			
Name	Domestic Express Packaging	International Express Packaging	Pallet Shipping
DesCP451p tion	Wrapped with transparent tape	Wrapped with yellow tape after wrapping black protective film	Use pallet that meet export requirements, and use white wrapping protective film to wrap and bind with cable ties

## 4. Company Information





- 📍 Office Address
- Global Exhibition

Pic No.4

#### 4.1. Company Introduction

📱 **Mobile Phone/WeChat:** +86-13410541523

📱 **Hong Kong Mobile Phone:** +852-67653519

☎️ **Tel:** +86-755-23215133

📍 **Shenzhen Office:** 11-12, Floor 14, Building 13, Qinchengda Building, Exit A, Honglang North Subway Station, Bao'an District, Shenzhen, China Mainland

📍 **Shenzhen Office:** Exit C, Qiao Touxu Metro Station, No. 66 Chongqing Road, Fuhai Avenue, Bao'an District, Shenzhen, China Mainland

📍 **Hong Kong Office:** Jianfa Street Industrial Zone, Tuen Mun, New Territories, Hong Kong, China

📍 **After-Sales Service Address:** Please contact our salesmen to obtain and provide the corresponding product maintenance reasons (Reference: [1.9. 0445010565 Top Fuel Pump Warranty Instructions](#) )

#### 4.2. Contact Information

Name	WeChat/Whatsapp
Ruby	+86-13410541523

#### 5. Copyright Statement

The material “[0445010565](#) *Top Fuel Pump Encyclopedia*” is the exclusive property of [www.topfuelpump.com](http://www.topfuelpump.com) and Shenzhen Shumatt Technology Co., Ltd., and it is protected by copyright law. Any unauthorized use of this material is strictly prohibited. This includes, but is not limited to, copying, reproducing, distributing, modifying, adapting, translating, or creating derivative works based on the content of this document. Additionally, it is not permitted to use this material in any form of public display, performance, or transmission without obtaining prior written consent from [www.topfuelpump.com](http://www.topfuelpump.com).

Failure to comply with these requirements may result in legal action. [www.topfuelpump.com](http://www.topfuelpump.com) reserves all rights to pursue legal remedies for any infringement of its copyright.

For any inquiries about using the passage, please contact [hison@shumatt.com](mailto:hison@shumatt.com).